

CONTENTS

TABLES IN TEXT

- [Table 1.1: South African total tax revenue, 2003/04 – 2008/09](#)
- [Table 1.2: Total budget revenue, 2003/04 – 2008/09](#)
- [Table 1.3: Contributions to SACU pool, 2003/04 – 2008/09](#)
- [Table 1.4: Share received from SACU pool, 2003/04 – 2008/09](#)
- [Table 1.5: Summary of tax relief, 2003/04 – 2008/09](#)
- [Table 1.6: Maximum marginal tax rates, 2003/04 – 2008/09](#)
- [Table 1.7: Total tax revenue and cost of collections, 2003/04 – 2008/09](#)
- [Table 1.8: Registered taxpayers, 2003/04 – 2008/09](#)
- [Table 1.9: Capital gains tax raised, 2003/04 – 2008/09](#)

FIGURES IN TEXT

- [Figure 1.1: Net quarterly tax revenue collections, 2003/04 – 2008/09](#)
- [Figure 1.2: Composition of main sources of tax revenue, 2003/04 – 2008/09](#)
- [Figure 1.3: Main revenue sources as percentage of GDP, 2003/04 – 2008/09](#)
- [Figure 1.4: Taxes on income and profits, 2003/04 – 2008/09](#)
- [Figure 1.5: Domestic taxes on goods and services – VAT, 2003/04 – 2008/09](#)
- [Figure 1.6: Domestic taxes on goods and services – Levies on fuel and Specific excise duties, 2003/04 – 2008/09](#)

TABLES

- [Table A1.1.1: Provincial and local government tax revenue, 2003/04 – 2008/09](#)
- [Table A1.2.1: Net monthly and quarterly tax revenue collections, 2003/04 – 2008/09](#)
- [Table A1.3.1: Tax revenue by main revenue source, 2003/04 – 2008/09](#)
- [Table A1.4.1: Tax revenue by main category, 2003/04 – 2008/09](#)
- [Table A1.5.1: Taxes on income and profits, 2003/04 – 2008/09](#)
 - [Table A1.5.2: Taxes on persons and individuals, 2003/04 – 2008/09](#)
 - [Table A1.5.3: Taxes on companies, 2003/04 – 2008/09](#)
- [Table A1.6.1: Taxes on property, 2003/04 – 2008/09](#)
- [Table A1.7.1: Domestic taxes on goods and services, 2003/04 – 2008/09](#)
 - [Table A1.7.2: Value-added tax \(VAT\), 2003/04 – 2008/09](#)

Table 1.1: South African total tax revenue, 2003/04 – 2008/09

R million	Nominal GDP ¹	Tax revenue			
		Total South Africa	National	Provinces ²	Local government ³
2003/04	1,303,906.8	324,712.7	302,442.6	3,306.6	18,963.5
2004/05	1,449,020.0	381,909.1	354,978.8	3,525.5	23,404.7
2005/06	1,613,812.2	446,537.7	417,195.7	4,337.1	25,004.9
2006/07	1,833,191.1	519,035.0	495,548.6	4,824.7	18,661.8
2007/08	2,081,624.9	599,565.0	572,814.6	5,398.3	21,352.1
2008/09	2,320,116.4	657,679.8	625,100.2	5,623.4	26,956.2
Percentage of Total South African tax revenue					
2003/04		100.0%	93.1%	1.0%	5.8%
2004/05		100.0%	92.9%	0.9%	6.1%
2005/06		100.0%	93.4%	1.0%	5.6%
2006/07		100.0%	95.5%	0.9%	3.6%
2007/08		100.0%	95.5%	0.9%	3.6%
2008/09		100.0%	95.0%	0.9%	4.1%
Percentage of GDP					
2003/04		24.9%	23.2%	0.3%	1.5%
2004/05		26.4%	24.5%	0.2%	1.6%
2005/06		27.7%	25.9%	0.3%	1.5%
2006/07		28.3%	27.0%	0.3%	1.0%
2007/08		28.8%	27.5%	0.3%	1.0%
2008/09		28.3%	26.9%	0.2%	1.2%

1. Source: South African Reserve Bank and Statistics South Africa.

2. Provincial numbers taken from the Provincial Budgets and Expenditure Reviews. The 2008/09 numbers are pre-audited.

3. Local government numbers taken from the Local Government Budgets and Expenditure Review. The financial year of the municipalities starts on 1 July to 30 June of the following year. The 2008/09 numbers are budgeted. The regional service council levies were abolished in 2006/07.

Table 1.2: Total budget revenue, 2003/04 – 2008/09

R million	Tax revenue ¹		Non-tax revenue ²		Total tax and non-tax revenue	Less: SACU payments	Total budget revenue	Nominal GDP ³	Total budget revenue as % of GDP
		%		%					
2003/04	302,442.6	97.8%	6,711.3	2.2%	309,153.9	-9,722.7	299,431.2	1,303,907	23.0%
2004/05	354,978.8	98.3%	6,203.3	1.7%	361,182.2	-13,327.8	347,854.4	1,449,020	24.0%
2005/06	417,195.7	98.0%	8,697.1	2.0%	425,892.8	-14,144.9	411,747.9	1,613,812	25.5%
2006/07	495,548.6	97.9%	10,843.3	2.1%	506,391.9	-25,194.9	481,197.0	1,833,191	26.2%
2007/08	572,814.6	98.0%	11,671.7	2.0%	584,486.3	-24,712.6	559,773.8	2,081,625	26.9%
2008/09	625,100.2	98.0%	12,603.3	2.0%	637,703.4	-28,920.6	608,782.8	2,320,116	26.2%

1. Mining leases and ownership has been reclassified as non-tax revenue. The historical years have been adjusted for comparative purposes.

2. Includes interest, dividends, rent on land, sales of goods and services, fines and penalties, sales of capital assets as well as financial transactions in assets and liabilities.

3. Source: Statistics South Africa; Gross Domestic Product (GDP), 3rd Quarter 2009.

Table 1.3: Contributions to SACU pool, 2003/04 – 2008/09

R million	Botswana	Lesotho	Namibia	Swaziland	Total BLNS	South Africa¹	Total contributions
2003/04	161.1	69.8	172.4	49.8	453.1	20,407.0	20,860.1
2004/05	162.5	98.5	186.5	28.9	476.4	26,493.8	26,970.2
2005/06	192.1	87.4	195.9	30.6	506.0	33,501.3	34,007.3
2006/07	173.6	86.6	363.9	161.7	785.8	40,563.2	41,349.1
2007/08	149.6	100.3	361.0	135.1	746.0	45,422.6	46,168.7
2008/09	311.6	110.2	446.0	64.3	932.2	43,172.9	44,105.1
Percentage year-on-year growth							
2003/04	-8.2%	105.7%	-36.0%	58.5%	-11.2%	0.8%	0.5%
2004/05	0.9%	41.1%	8.2%	-41.9%	5.1%	29.8%	29.3%
2005/06	18.2%	-11.2%	5.0%	5.7%	6.2%	26.4%	26.1%
2006/07	-9.6%	-1.0%	85.8%	428.5%	55.3%	21.1%	21.6%
2007/08	-13.8%	15.9%	-0.8%	-16.5%	-5.1%	12.0%	11.7%
2008/09	108.3%	9.9%	23.5%	-52.4%	25.0%	-5.0%	-4.5%

1. Contribution by South Africa includes some collections on behalf of BLNS countries.

Table 1.4: Share received from SACU pool, 2003/04 – 2008/09

R million	Botswana	Lesotho	Namibia	Swaziland	Total BLNS	South Africa¹	Total
2003/04	3,387.6	1,421.7	3,035.6	1,877.8	9,722.7	11,137.4	20,860.1
2004/05	4,336.7	2,012.4	4,206.8	2,771.9	13,327.8	13,642.4	26,970.2
2005/06	4,772.6	2,306.0	3,891.9	3,136.2	14,106.7	19,900.6	34,007.3
2006/07	7,756.3	3,945.0	8,161.2	5,321.1	25,183.6	16,165.5	41,349.1
2007/08	9,001.4	4,097.7	6,621.8	4,989.0	24,709.9	21,458.7	46,168.7
2008/09	9,472.8	4,901.0	8,502.1	6,009.0	28,884.9	15,220.2	44,105.1
Percentage of total							
2003/04	16.2%	6.8%	14.6%	9.0%	46.6%	53.4%	100.0%
2004/05	16.1%	7.5%	15.6%	10.3%	49.4%	50.6%	100.0%
2005/06	14.0%	6.8%	11.4%	9.2%	41.5%	58.5%	100.0%
2006/07	18.8%	9.5%	19.7%	12.9%	60.9%	39.1%	100.0%
2007/08	19.5%	8.9%	14.3%	10.8%	53.5%	46.5%	100.0%
2008/09	21.5%	11.1%	19.3%	13.6%	65.5%	34.5%	100.0%
Percentage year-on-year growth							
2003/04	31.6%	-3.3%	16.9%	16.1%	17.7%	-10.9%	0.5%
2004/05	28.0%	41.5%	38.6%	47.6%	37.1%	22.5%	29.3%
2005/06	10.1%	14.6%	-7.5%	13.1%	5.8%	45.9%	26.1%
2006/07	62.5%	71.1%	109.7%	69.7%	78.5%	-18.8%	21.6%
2007/08	16.1%	3.9%	-18.9%	-6.2%	-1.9%	32.7%	11.7%
2008/09	5.2%	19.6%	28.4%	20.4%	16.9%	-29.1%	-4.5%

1. Includes amounts allocated to South Africa, the balance of the "surplus/deficit" for that fiscal year and allocations to the SACU Secretariat.

Table 1.5: Summary of tax relief, 2003/04 – 2008/09

R million	Direct taxes				Indirect taxes				Total relief
	PIT	CIT	Other	Total	Excise	Fuel levy	Other¹	Total	
2003/04	-13,427	-2,060	–	-15,487	907	642	-1,119	430	-15,057
2004/05	-4,062	–	–	-4,062	1,453	909	-600	1,762	-2,300
2005/06	-7,110	-2,000	-1,477	-10,587	1,310	950	-1,054	1,206	-9,381
2006/07	-12,125	-2,400	-440	-14,965	1,370	–	-5,532	-4,162	-19,127
2007/08	-8,870	-2,785	-3,000	-14,655	1,480	950	-175	2,255	-12,400
2008/09	-7,700	-7,400	–	-15,100	1,350	1,250	2,000	4,600	-10,500

1. The 2006/07 number includes R4.5 billion transfer duties. The electricity levy was not introduced in 2008/09.

Table 1.6: Maximum marginal tax rates, 2003/04 – 2008/09

Percentage	PIT ¹	CIT	STC	VAT	RFT ²
01 Apr 2003 – 31 Mar 2004	40.0%	30.0%	12.5%	14.0%	18.0%
01 Apr 2004 – 31 Mar 2005	40.0%	30.0%	12.5%	14.0%	18.0%
01 Apr 2005 – 28 Feb 2006	40.0%	29.0%	12.5%	14.0%	18.0%
01 Mar 2006 – 31 Mar 2006	40.0%	29.0%	12.5%	14.0%	9.0%
01 Apr 2006 – 28 Feb 2007	40.0%	29.0%	12.5%	14.0%	9.0%
01 Mar 2007 – 30 Sep 2007	40.0%	29.0%	12.5%	14.0%	0.0%
01 Oct 2007 – 31 Mar 2008	40.0%	29.0%	10.0%	14.0%	0.0%
01 Apr 2008 – 31 Mar 2009	40.0%	28.0%	10.0%	14.0%	0.0%

1. An individual's tax year starts on 1 March and ends at the end of February the following year.

2. Tax on retirement funds.

Table 1.7: Total tax revenue and cost of collections, 2003/04 – 2008/09

R million	Tax revenue collected	Operating cost¹	Operating cost as a % of tax revenue
2003/04	302,442.6	3,562.8	1.18%
2004/05	354,978.8	4,311.7	1.21%
2005/06	417,195.7	5,135.5	1.23%
2006/07	495,548.6	5,156.1	1.04%
2007/08	572,814.6	5,615.3	0.98%
2008/09	625,100.2	6,528.1	1.04%

1. SARS's own account budget includes revenue transferred from National Treasury as well as other operating revenue.

Table 1.8: Registered taxpayers, 2003/04 – 2008/09

Number	Individuals¹	Companies (CIT)¹	Trusts¹	PAYE¹	VAT¹
2003/04	3,777,005	817,381	283,825	274,764	536,281
2004/05	4,115,293	933,136	318,967	302,880	578,138
2005/06	4,476,261	1,054,969	344,882	330,194	633,703
2006/07	4,764,105	1,218,905	374,411	349,077	677,153
2007/08	5,204,805	1,584,002	384,747	379,675	745,487
2008/09	5,540,646	1,834,009	392,260	393,974	737,885
Percentage year-on-year growth					
2003/04	10.6%	0.3%	11.5%	8.8%	6.0%
2004/05	9.0%	14.2%	12.4%	10.2%	7.8%
2005/06	8.8%	13.1%	8.1%	9.0%	9.6%
2006/07	6.4%	15.5%	8.6%	5.7%	6.9%
2007/08	9.3%	30.0%	2.8%	8.8%	10.1%
2008/09	6.5%	15.8%	2.0%	3.8%	-1.0%

1. Excludes cases where status is in suspense, estate and address unknown.

The tax year for individuals starts on 1 March and ends at the end of February the following year. The tax year for companies is normally the financial year of the company for financial reporting purposes.

Table 1.9: Capital gains tax raised, 2003/04 – 2008/09

R million	Capital gains tax raised		
	Individuals	Companies	Total
Prior to 2007/08	1,849.6	3,241.4	5,091.0
2007/08	1,167.3	2,493.6	3,660.9
2008/09	3,806.7	4,135.9	7,942.7

Figure 1.1: Net quarterly tax revenue collections, 2003/04 – 2008/09

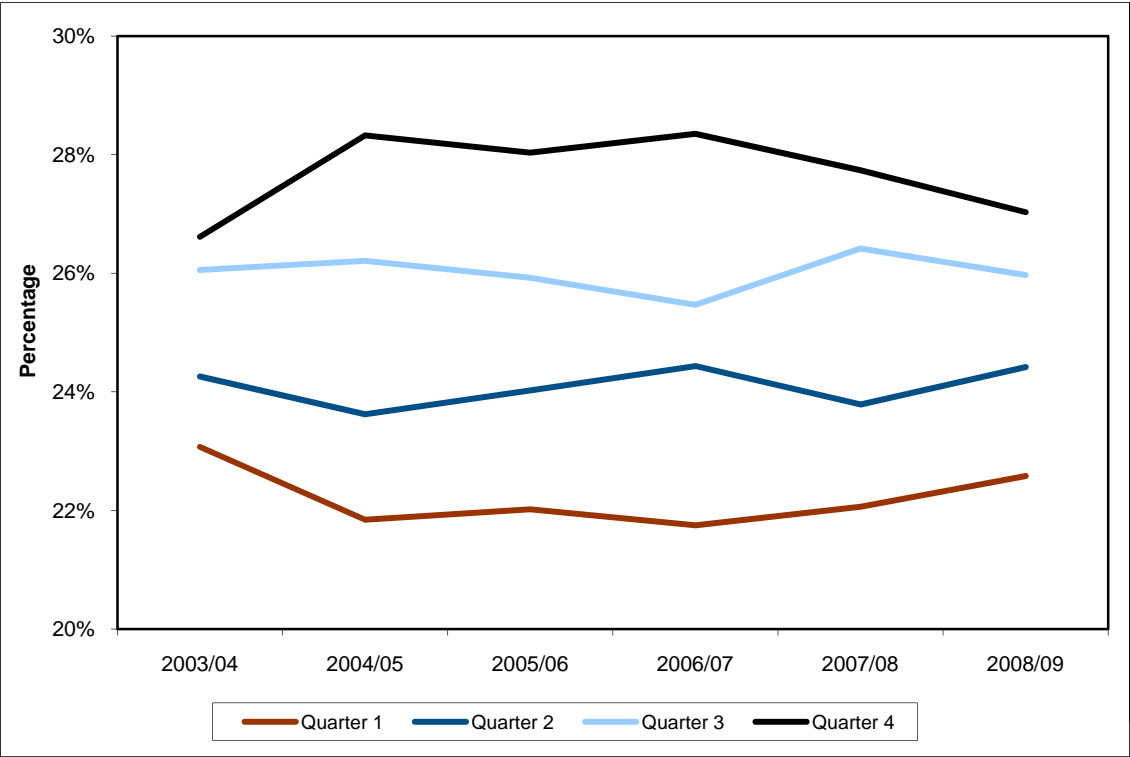


Figure 1.2: Composition of main sources of tax revenue, 2003/04 – 2008/09

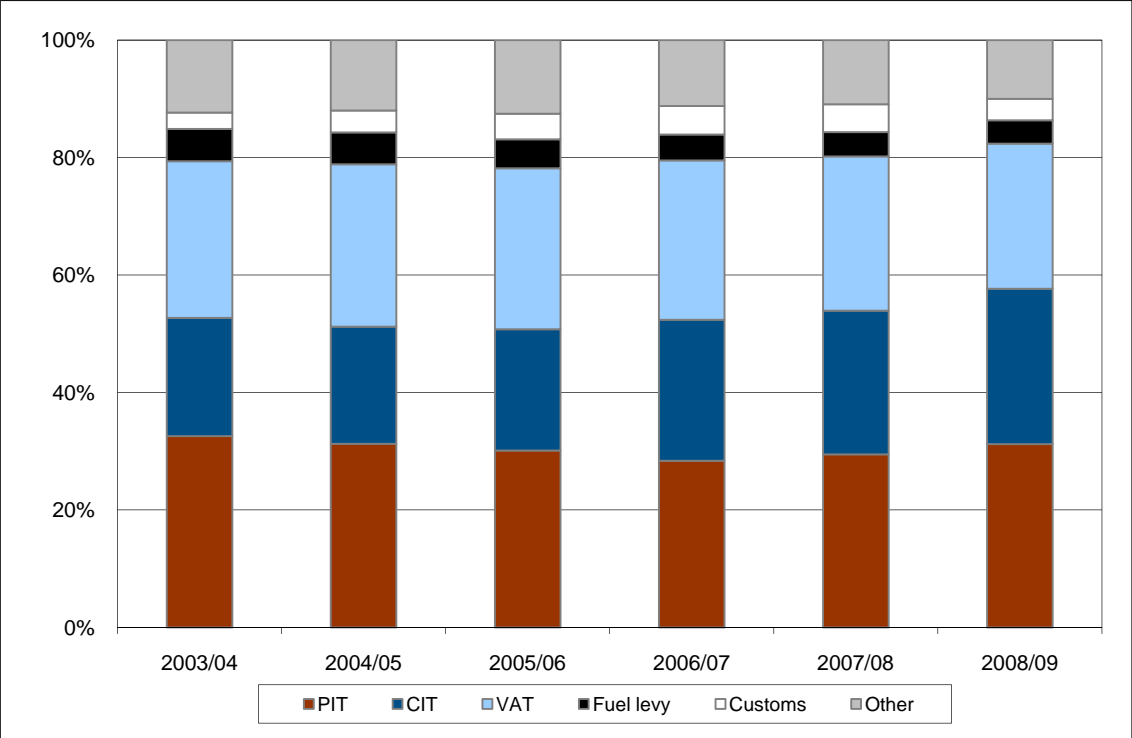


Figure 1.3: Main revenue sources as percentage of GDP, 2003/04 – 2008/09

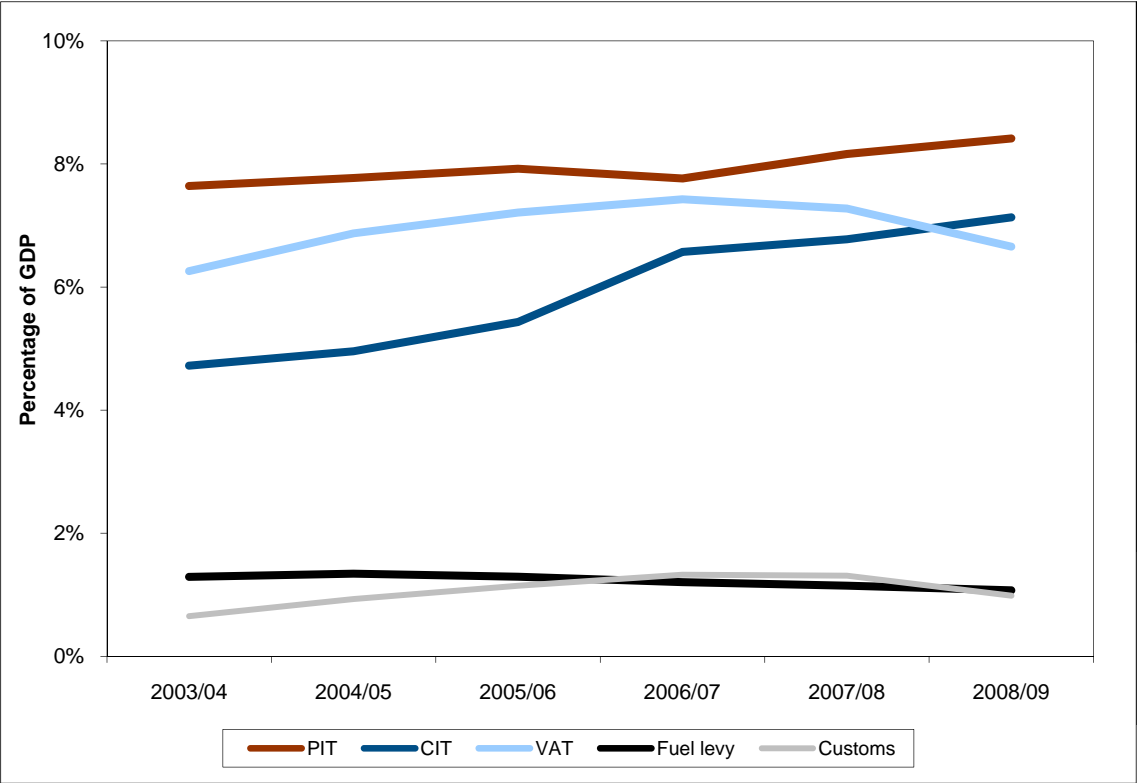


Figure 1.4: Taxes on income and profits, 2003/04 – 2008/09

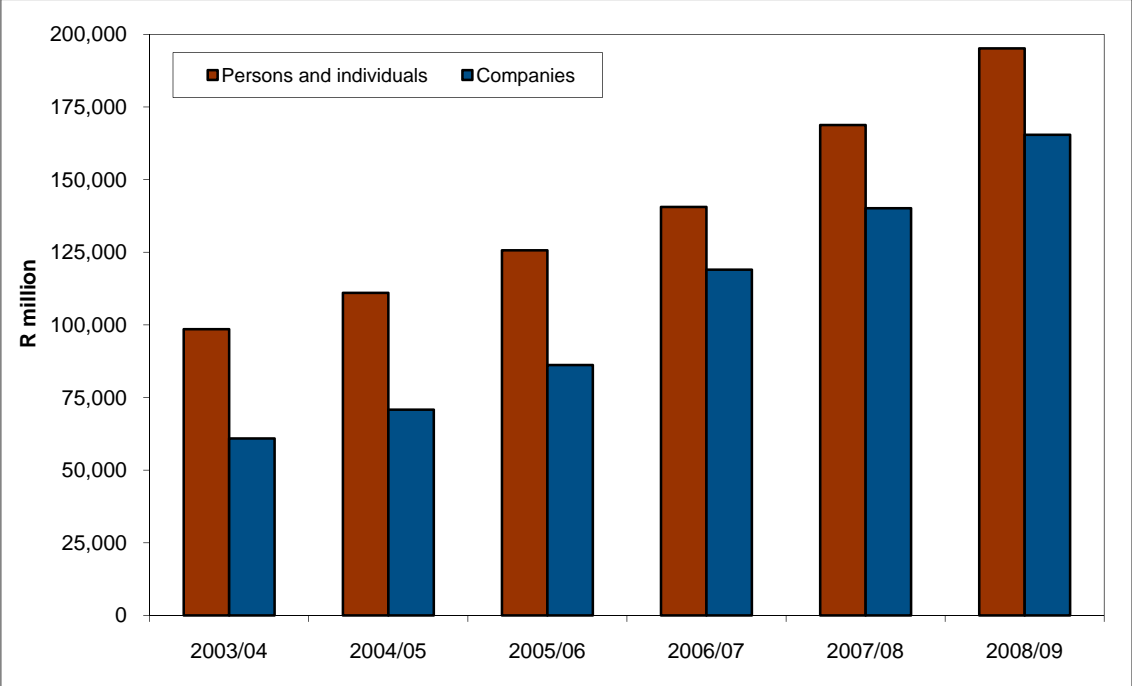


Figure 1.5: Domestic taxes on goods and services – VAT, 2003/04 – 2008/09

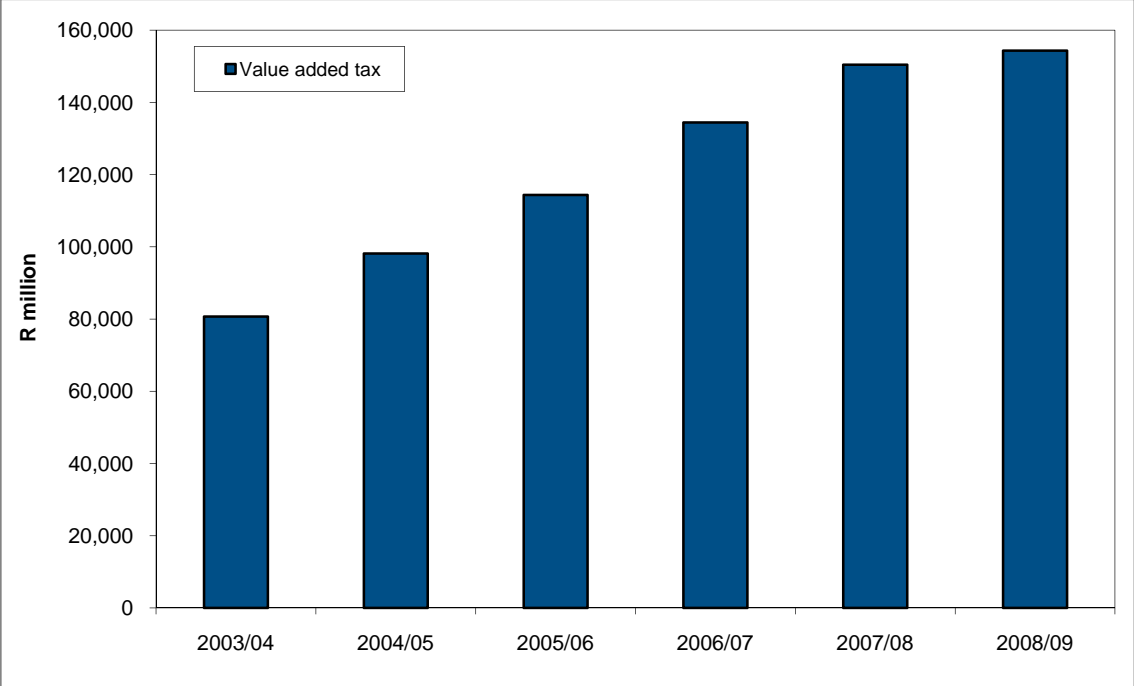


Figure 1.6: Domestic taxes on goods and services – Levies on fuel and Specific excise duties, 2003/0

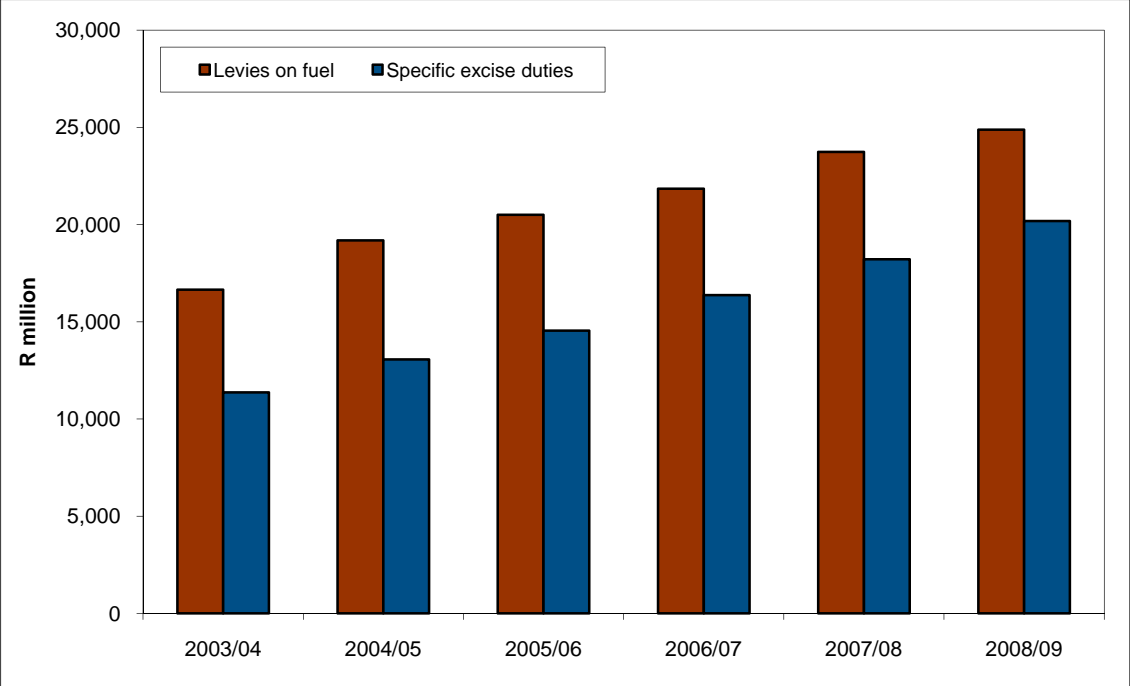


Table A1.1.1: Provincial and local government tax revenue, 2003/04 – 2008/09

R million	Provinces ¹					Local government ²		
	Casino taxes	Horse racing taxes	Liquor licences	Motor vehicle licences	Total provincial tax revenue	Property rates	Regional service levies ³	Total local government tax revenue
2003/04	650.8	103.4	14.4	2,538.0	3,306.6	13,980.2	4,983.3	18,963.5
2004/05	723.0	89.9	17.7	2,694.9	3,525.5	16,396.0	7,008.8	23,404.7
2005/06	916.4	92.3	23.2	3,305.2	4,337.1	17,401.0	7,603.9	25,004.9
2006/07	1,084.2	103.5	21.4	3,615.6	4,824.7	18,276.0	385.7	18,661.8
2007/08	1,265.4	120.8	24.1	3,988.0	5,398.3	21,256.9	95.2	21,352.1
2008/09	1,325.3	149.9	19.2	4,129.0	5,623.4	26,956.2	–	26,956.2

1. Provincial numbers taken from the Provincial Budgets and Expenditure Reviews. The 2008/09 numbers are pre-audited.

2. Local government numbers taken from the Local Government Budgets and Expenditure Review. The financial year of the municipalities starts on 1 July to 30 June of the following year. The 2008/09 numbers are budgeted.

3. Regional service levies were abolished in 2006/07.

Table A1.2.1: Net monthly and quarterly tax revenue collections, 2003/04 – 2008/09

R million	Month												Total
	Apr	May	Jun	Jul	Aug	Sep	Oct	Nov	Dec	Jan	Feb	Mar	
2003/04	17,734.6	19,102.0	32,939.3	22,800.0	23,530.1	27,037.1	24,508.1	21,467.3	32,830.3	23,880.5	23,265.2	33,348.0	302,442.6
2004/05	20,337.8	22,128.1	35,075.6	24,119.4	24,541.9	35,189.6	26,715.8	25,030.5	41,289.0	28,434.0	28,022.5	44,094.5	354,978.8
2005/06	23,432.1	26,259.4	42,170.5	29,229.6	28,477.9	42,516.6	30,651.6	30,742.7	46,759.6	33,079.6	31,573.5	52,302.7	417,195.7
2006/07	25,908.2	29,629.8	52,238.5	32,775.4	36,385.9	51,920.8	35,123.4	33,960.3	57,114.3	36,637.5	40,758.0	63,096.4	495,548.6
2007/08	31,225.6	33,481.4	61,663.7	36,127.8	40,841.4	59,283.3	41,921.5	39,679.1	69,716.8	42,341.2	46,451.7	70,081.0	572,814.6
2008/09	33,809.6	36,233.0	71,110.0	43,485.3	46,880.9	62,270.2	42,369.9	40,280.9	79,692.3	42,507.8	50,944.4	75,515.8	625,100.2
Percentage of total													
2003/04	5.9%	6.3%	10.9%	7.5%	7.8%	8.9%	8.1%	7.1%	10.9%	7.9%	7.7%	11.0%	100.0%
2004/05	5.7%	6.2%	9.9%	6.8%	6.9%	9.9%	7.5%	7.1%	11.6%	8.0%	7.9%	12.4%	100.0%
2005/06	5.6%	6.3%	10.1%	7.0%	6.8%	10.2%	7.3%	7.4%	11.2%	7.9%	7.6%	12.5%	100.0%
2006/07	5.2%	6.0%	10.5%	6.6%	7.3%	10.5%	7.1%	6.9%	11.5%	7.4%	8.2%	12.7%	100.0%
2007/08	5.5%	5.8%	10.8%	6.3%	7.1%	10.3%	7.3%	6.9%	12.2%	7.4%	8.1%	12.2%	100.0%
2008/09	5.4%	5.8%	11.4%	7.0%	7.5%	10.0%	6.8%	6.4%	12.7%	6.8%	8.1%	12.1%	100.0%
Percentage of total													
	Quarter 1			Quarter 2			Quarter 3			Quarter 4			
2003/04	23.1%			24.3%			26.1%			26.6%			100.0%
2004/05	21.8%			23.6%			26.2%			28.3%			100.0%
2005/06	22.0%			24.0%			25.9%			28.0%			100.0%
2006/07	21.7%			24.4%			25.5%			28.4%			100.0%
2007/08	22.1%			23.8%			26.4%			27.7%			100.0%
2008/09	22.6%			24.4%			26.0%			27.0%			100.0%

Table A1.3.1: Tax revenue by main revenue source, 2003/04 – 2008/09

R million	Personal income tax (PIT)	Corporate income tax (CIT)	Secondary tax on companies (STC)	Value Added Tax (VAT)	Fuel levy	Customs	Specific excise duties	Other ¹	Total tax revenue
2003/04	98,495.1	60,880.8	6,132.9	80,681.8	16,652.4	8,414.3	11,364.6	19,820.7	302,442.6
2004/05	110,981.9	70,781.9	7,487.1	98,157.9	19,190.4	13,286.5	13,066.7	22,026.6	354,978.8
2005/06	125,645.3	86,160.8	12,277.6	114,351.6	20,506.7	18,201.9	14,546.5	25,505.2	417,195.7
2006/07	140,578.3	118,998.6	15,291.4	134,462.6	21,844.6	24,002.2	16,369.4	24,001.5	495,548.6
2007/08	168,774.4	140,119.8	20,585.4	150,442.8	23,740.5	27,081.9	18,218.4	23,851.3	572,814.6
2008/09	195,115.0	165,378.3	20,017.6	154,343.1	24,883.8	22,852.4	20,184.5	22,325.4	625,100.2
Percentage of total									
2003/04	32.6%	20.1%	2.0%	26.7%	5.5%	2.8%	3.8%	6.6%	100.0%
2004/05	31.3%	19.9%	2.1%	27.7%	5.4%	3.7%	3.7%	6.2%	100.0%
2005/06	30.1%	20.7%	2.9%	27.4%	4.9%	4.4%	3.5%	6.1%	100.0%
2006/07	28.4%	24.0%	3.1%	27.1%	4.4%	4.8%	3.3%	4.8%	100.0%
2007/08	29.5%	24.5%	3.6%	26.3%	4.1%	4.7%	3.2%	4.2%	100.0%
2008/09	31.2%	26.5%	3.2%	24.7%	4.0%	3.7%	3.2%	3.6%	100.0%
Nominal percentage increase from 2003/04 to 2008/09									
Cumulative	98.1%	171.6%	226.4%	91.3%	49.4%	171.6%	77.6%	12.6%	106.7%
Per year	14.7%	22.1%	26.7%	13.9%	8.4%	22.1%	12.2%	2.4%	15.6%
Percentage of GDP									
2003/04	7.6%	4.7%	0.5%	6.2%	1.3%	0.6%	0.9%	1.5%	23.2%
2004/05	7.7%	4.9%	0.5%	6.8%	1.3%	0.9%	0.9%	1.5%	24.5%
2005/06	7.8%	5.3%	0.8%	7.1%	1.3%	1.1%	0.9%	1.6%	25.9%
2006/07	7.7%	6.5%	0.8%	7.3%	1.2%	1.3%	0.9%	1.3%	27.0%
2007/08	8.1%	6.7%	1.0%	7.2%	1.1%	1.3%	0.9%	1.1%	27.5%
2008/09	8.4%	7.1%	0.9%	6.7%	1.1%	1.0%	0.9%	1.0%	26.9%

Table A1.4.1: Tax revenue by main category, 2003/04 – 2008/09

	Taxes on income and profits	Taxes on payroll and workforce	Taxes on property ¹	Domestic taxes on goods and services	Taxes on international trade and transactions	Stamp duties and fees & state miscellaneous revenue ²	Total tax revenue
R million							
2003/04	171,962.8	3,896.4	6,707.5	110,108.6	8,414.3	1,353.0	302,442.6
2004/05	195,219.1	4,443.3	9,012.6	131,980.6	13,286.5	1,036.7	354,978.8
2005/06	230,803.6	4,872.0	11,137.5	151,223.6	18,201.9	957.1	417,195.7
2006/07	279,990.5	5,597.4	10,332.3	174,671.4	24,002.2	954.8	495,548.6
2007/08	332,058.3	6,330.9	11,883.9	194,690.3	27,081.9	769.4	572,814.6
2008/09	383,482.7	7,327.5	9,477.1	201,416.1	22,852.4	544.4	625,100.2
Percentage of total							
2003/04	56.9%	1.3%	2.2%	36.4%	2.8%	0.4%	100.0%
2004/05	55.0%	1.3%	2.5%	37.2%	3.7%	0.3%	100.0%
2005/06	55.3%	1.2%	2.7%	36.2%	4.4%	0.2%	100.0%
2006/07	56.5%	1.1%	2.1%	35.2%	4.8%	0.2%	100.0%
2007/08	58.0%	1.1%	2.1%	34.0%	4.7%	0.1%	100.0%
2008/09	61.3%	1.2%	1.5%	32.2%	3.7%	0.1%	100.0%
Percentage change year-on-year							
2003/04	4.5%	16.2%	31.9%	13.2%	-12.5%	-32.5%	7.3%
2004/05	13.5%	14.0%	34.4%	19.9%	57.9%	-23.4%	17.4%
2005/06	18.2%	9.6%	23.6%	14.6%	37.0%	-7.7%	17.5%
2006/07	21.3%	14.9%	-7.2%	15.5%	31.9%	-0.2%	18.8%
2007/08	18.6%	13.1%	15.0%	11.5%	12.8%	-19.4%	15.6%
2008/09	15.5%	15.7%	-20.3%	3.5%	-15.6%	-29.2%	9.1%

1. Includes transfer duties, uncertificated securities tax, donations tax and estate duty.

2. Revenue received by SARS which could not be allocated to specific revenue types.

Table A1.5.1: Taxes on income and profits, 2003/04 – 2008/09

R million	Taxes on income and profits						Total
	Persons and individuals	Companies	Secondary tax on companies	Tax on retirement funds	Interest on overdue income tax	Other ¹	
2003/04	98,495.1	60,880.8	6,132.9	4,897.7	1,556.3	–	171,962.8
2004/05	110,981.9	70,781.9	7,487.1	4,406.1	1,562.2	–	195,219.1
2005/06	125,645.3	86,160.8	12,277.6	4,783.1	1,936.7	–	230,803.6
2006/07	140,578.3	118,998.6	15,291.4	3,190.5	1,931.1	0.7	279,990.5
2007/08	168,774.4	140,119.8	20,585.4	285.4	2,280.5	12.8	332,058.3
2008/09	195,115.0	165,378.3	20,017.6	143.3	2,777.0	51.6	383,482.7
Percentage of total							
2002/03	57.3%	33.9%	3.8%	4.2%	0.7%		100.0%
2003/04	57.3%	35.4%	3.6%	2.8%	0.9%		100.0%
2004/05	56.8%	36.3%	3.8%	2.3%	0.8%		100.0%
2005/06	54.4%	37.3%	5.3%	2.1%	0.8%		100.0%
2006/07	50.2%	42.5%	5.5%	1.1%	0.7%		100.0%
2007/08	50.8%	42.2%	6.2%	0.1%	0.7%		100.0%
2008/09	50.9%	43.1%	5.2%	0.0%	0.7%		100.0%
Percentage year-on-year growth							
2003/04	4.4%	9.2%	-3.0%	-29.9%	33.1%		4.5%
2004/05	12.7%	16.3%	22.1%	-10.0%	0.4%		13.5%
2005/06	13.2%	21.7%	64.0%	8.6%	24.0%		18.2%
2006/07	11.9%	38.1%	24.5%	-33.3%	-0.3%		21.3%
2007/08	20.1%	17.7%	34.6%	-91.1%	18.1%		18.6%
2008/09	15.6%	18.0%	-2.8%	-49.8%	21.8%		15.5%

1. Small business tax amnesty.

Table A1.5.2: Taxes on persons and individuals, 2003/04 – 2008/09

R million	Persons and individuals				
	PAYE	Provisional tax	Assessment payments	Refunds	Total
2003/04	94,592.5	7,132.3	3,495.0	-6,724.7	98,495.1
2004/05	106,719.2	7,748.4	3,725.2	-7,210.9	110,981.9
2005/06	121,025.5	8,720.1	4,065.9	-8,166.1	125,645.3
2006/07	133,760.4	10,370.8	4,986.8	-8,539.7	140,578.3
2007/08	158,106.2	12,319.7	4,796.3	-6,447.8	168,774.4
2008/09	183,695.4	16,326.5	6,291.8	-11,198.8	195,115.0
Percentage of total					
2003/04	96.0%	7.2%	3.5%	-6.8%	100.0%
2004/05	96.2%	7.0%	3.4%	-6.5%	100.0%
2005/06	96.3%	6.9%	3.2%	-6.5%	100.0%
2006/07	95.2%	7.4%	3.5%	-6.1%	100.0%
2007/08	93.7%	7.3%	2.8%	-3.8%	100.0%
2008/09	94.1%	8.4%	3.2%	-5.7%	100.0%
Percentage year-on-year growth					
2003/04	4.7%	0.2%	6.5%	4.2%	4.4%
2004/05	12.8%	8.6%	6.6%	7.2%	12.7%
2005/06	13.4%	12.5%	9.1%	13.2%	13.2%
2006/07	10.5%	18.9%	22.7%	4.6%	11.9%
2007/08	18.2%	18.8%	-3.8%	-24.5%	20.1%
2008/09	16.2%	32.5%	31.2%	73.7%	15.6%

Table A1.5.3: Taxes on companies, 2003/04 – 2008/09

R million	Companies				Total
	Provisional tax	Assessment payments	Royalties	Refunds	
2003/04	60,673.0	3,040.6	99.5	-2,932.2	60,880.8
2004/05	70,571.8	4,007.4	145.4	-3,942.7	70,781.9
2005/06	87,949.6	4,487.9	123.7	-6,400.4	86,160.8
2006/07	118,205.1	7,084.2	513.5	-6,804.2	118,998.6
2007/08	139,281.0	7,595.9	203.8	-6,960.8	140,119.8
2008/09	163,295.1	9,831.1	386.0	-8,133.9	165,378.3
Percentage of total					
2003/04	99.7%	5.0%	0.2%	-4.8%	100.0%
2004/05	99.7%	5.7%	0.2%	-5.6%	100.0%
2005/06	102.1%	5.2%	0.1%	-7.4%	100.0%
2006/07	99.3%	6.0%	0.4%	-5.7%	100.0%
2007/08	99.4%	5.4%	0.1%	-5.0%	100.0%
2008/09	98.7%	5.9%	0.2%	-4.9%	100.0%
Percentage year-on-year growth					
2003/04	7.2%	4.1%	-52.5%	-26.0%	9.2%
2004/05	16.3%	31.8%	46.1%	34.5%	16.3%
2005/06	24.6%	12.0%	-14.9%	62.3%	21.7%
2006/07	34.4%	57.9%	315.2%	6.3%	38.1%
2007/08	17.8%	7.2%	-60.3%	2.3%	17.7%
2008/09	17.2%	29.4%	89.4%	16.9%	18.0%

Table A1.6.1: Taxes on property, 2003/04 – 2008/09

R million	Taxes on property				
	Donations tax	Estate duty	Securities transfer tax ¹	Transfer duties	Total
2003/04	17.1	417.1	1,101.1	5,172.1	6,707.5
2004/05	25.2	506.9	1,365.9	7,114.6	9,012.6
2005/06	29.5	624.7	1,973.4	8,510.0	11,137.5
2006/07	47.0	747.4	2,763.9	6,774.0	10,332.3
2007/08	27.6	691.0	3,757.1	7,408.2	11,883.9
2008/09	125.0	756.7	3,664.5	4,930.9	9,477.1
Percentage of total					
2003/04	0.3%	6.2%	16.4%	77.1%	100.0%
2004/05	0.3%	5.6%	15.2%	78.9%	100.0%
2005/06	0.3%	5.6%	17.7%	76.4%	100.0%
2006/07	0.5%	7.2%	26.7%	65.6%	100.0%
2007/08	0.2%	5.8%	31.6%	62.3%	100.0%
2008/09	1.3%	8.0%	38.7%	52.0%	100.0%
Percentage year-on-year growth					
2003/04	-3.2%	-3.6%	-8.6%	50.8%	31.9%
2004/05	47.0%	21.5%	24.0%	37.6%	34.4%
2005/06	17.0%	23.2%	44.5%	19.6%	23.6%
2006/07	59.6%	19.7%	40.1%	-20.4%	-7.2%
2007/08	-41.4%	-7.5%	35.9%	9.4%	15.0%
2008/09	353.7%	9.5%	-2.5%	-33.4%	-20.3%

1. Marketable securities tax (MST) prior to 2006/07 and Uncertificated securities tax (UST) prior to 1 July 2008.

Table A1.7.1: Domestic taxes on goods and services, 2003/04 – 2008/09

R million	Domestic taxes on goods and services						Total
	Value added tax	Specific excise duties	Ad valorem excise duties	Levies on fuel	Air passenger departure tax	Other ¹	
2003/04	80,681.8	11,364.6	1,016.2	16,652.4	367.2	26.5	110,108.6
2004/05	98,157.9	13,066.7	1,015.2	19,190.4	412.2	138.3	131,980.6
2005/06	114,351.6	14,546.5	1,157.3	20,506.7	458.2	203.4	151,223.6
2006/07	134,462.6	16,369.4	1,282.7	21,844.6	484.8	227.2	174,671.4
2007/08	150,442.8	18,218.4	1,480.5	23,740.5	540.6	267.4	194,690.3
2008/09	154,343.1	20,184.5	1,169.5	24,883.8	549.4	285.7	201,416.1
Percentage of total							
2002/03	72.1%	10.7%	1.1%	15.8%	0.3%	0.0%	100.0%
2003/04	73.3%	10.3%	0.9%	15.1%	0.3%	0.0%	100.0%
2004/05	74.4%	9.9%	0.8%	14.5%	0.3%	0.1%	100.0%
2005/06	75.6%	9.6%	0.8%	13.6%	0.3%	0.1%	100.0%
2006/07	77.0%	9.4%	0.7%	12.5%	0.3%	0.1%	100.0%
2007/08	77.3%	9.4%	0.8%	12.2%	0.3%	0.1%	100.0%
2008/09	76.6%	10.0%	0.6%	12.4%	0.3%	0.1%	100.0%
Percentage year-on-year growth							
2003/04	15.0%	9.0%	-3.2%	8.6%	13.1%	-12.5%	13.2%
2004/05	21.7%	15.0%	-0.1%	15.2%	12.3%	421.0%	19.9%
2005/06	16.5%	11.3%	14.0%	6.9%	11.2%	47.1%	14.6%
2006/07	17.6%	12.5%	10.8%	6.5%	5.8%	11.7%	15.5%
2007/08	11.9%	11.3%	15.4%	8.7%	11.5%	17.7%	11.5%
2008/09	2.6%	10.8%	-21.0%	4.8%	1.6%	6.9%	3.5%

1. Includes levy on plastic bags, mining leases and ownership, and Universal Service Fund.

Table A1.7.2: Value-added tax (VAT), 2003/04 – 2008/09

R million	VAT				
	Domestic	Customs	Gross	Refunds	Total
2003/04	96,405.3	36,947.5	133,352.7	-52,671.0	80,681.8
2004/05	110,166.8	43,465.7	153,632.5	-55,474.7	98,157.9
2005/06	125,756.3	50,261.1	176,017.4	-61,665.8	114,351.6
2006/07	144,884.0	66,917.0	211,801.0	-77,338.4	134,462.6
2007/08	171,618.8	77,929.2	249,548.0	-99,105.1	150,442.8
2008/09	187,171.1	92,009.9	279,181.0	-124,837.9	154,343.1
Percentage of total					
2003/04	72.3%	27.7%	100.0%	-39.5%	60.5%
2004/05	71.7%	28.3%	100.0%	-36.1%	63.9%
2005/06	71.4%	28.6%	100.0%	-35.0%	65.0%
2006/07	68.4%	31.6%	100.0%	-36.5%	63.5%
2007/08	68.8%	31.2%	100.0%	-39.7%	60.3%
2008/09	67.0%	33.0%	100.0%	-44.7%	55.3%
Percentage year-on-year growth					
2003/04	15.2%	-2.1%	9.8%	2.7%	15.0%
2004/05	14.3%	17.6%	15.2%	5.3%	21.7%
2005/06	14.2%	15.6%	14.6%	11.2%	16.5%
2006/07	15.2%	33.1%	20.3%	25.4%	17.6%
2007/08	18.5%	16.5%	17.8%	28.1%	11.9%
2008/09	9.1%	18.1%	11.9%	26.0%	2.6%